

Tuscola High School 2024

# ECONOMICS & PERSONAL FINANCE

Ms. Hyatt



HELLO AND  
WELCOME BACK  
TO SCHOOL!





# HOW TO CONTACT YOUR TEACHER:

Ms. Hyatt

Email: [mehyatt@haywood.k12.nc.us](mailto:mehyatt@haywood.k12.nc.us)

Best way to contact me=email  
Parents & students are welcome to  
email at all hours. I will only see the  
messages when I check my email;  
therefore, you can send one at any  
time.



# INTRODUCTION TO EPF



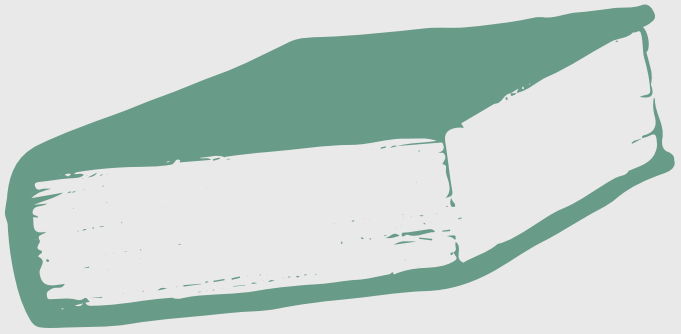
- The use of our resources to meet our wants/needs
- The role of the government in our economic system & how other nations do it differently
- Relationship of education/income/standard of living



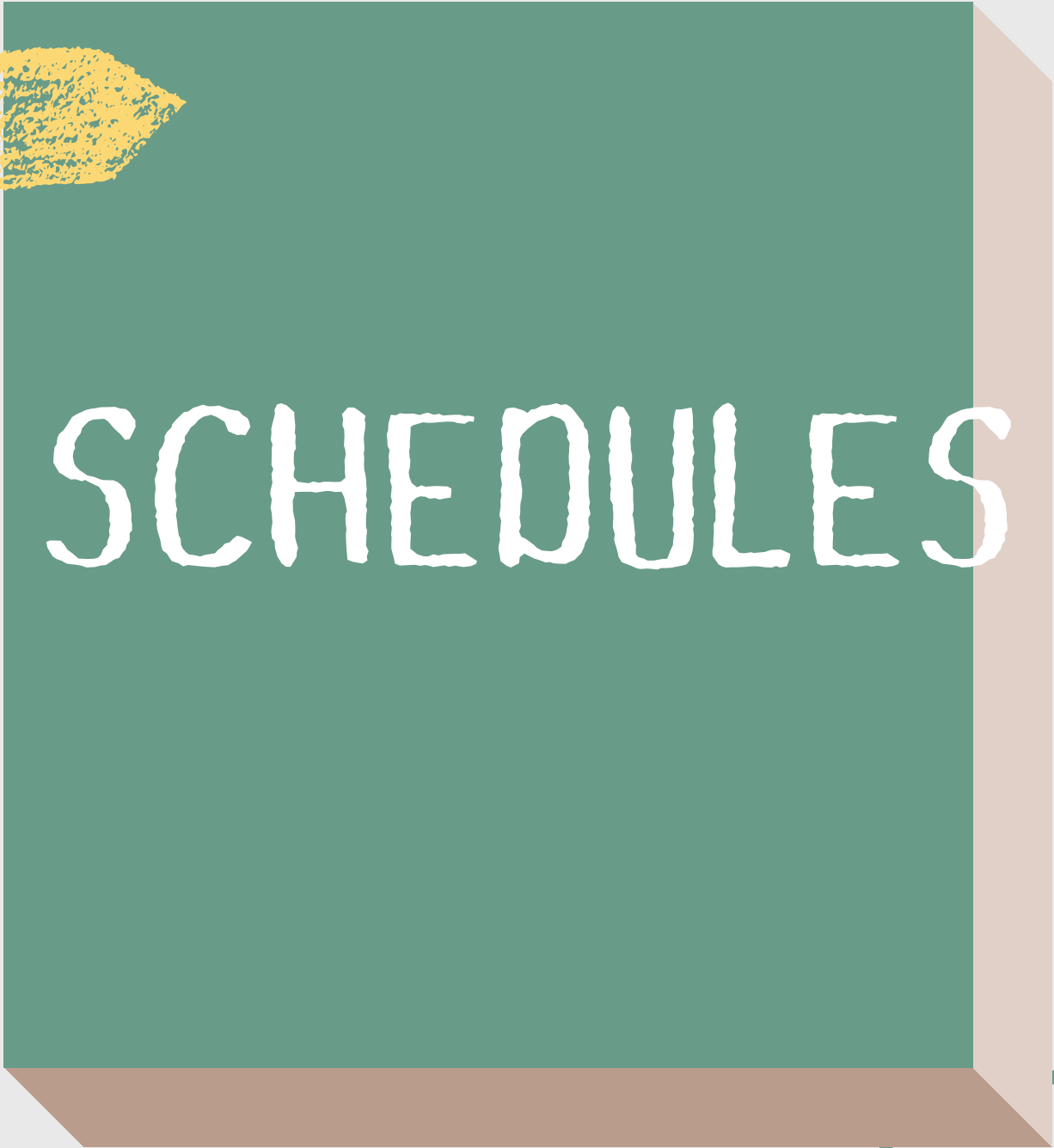
Taxes: How they work. Why do we have them?  
Money & credit management  
Consumer decision making

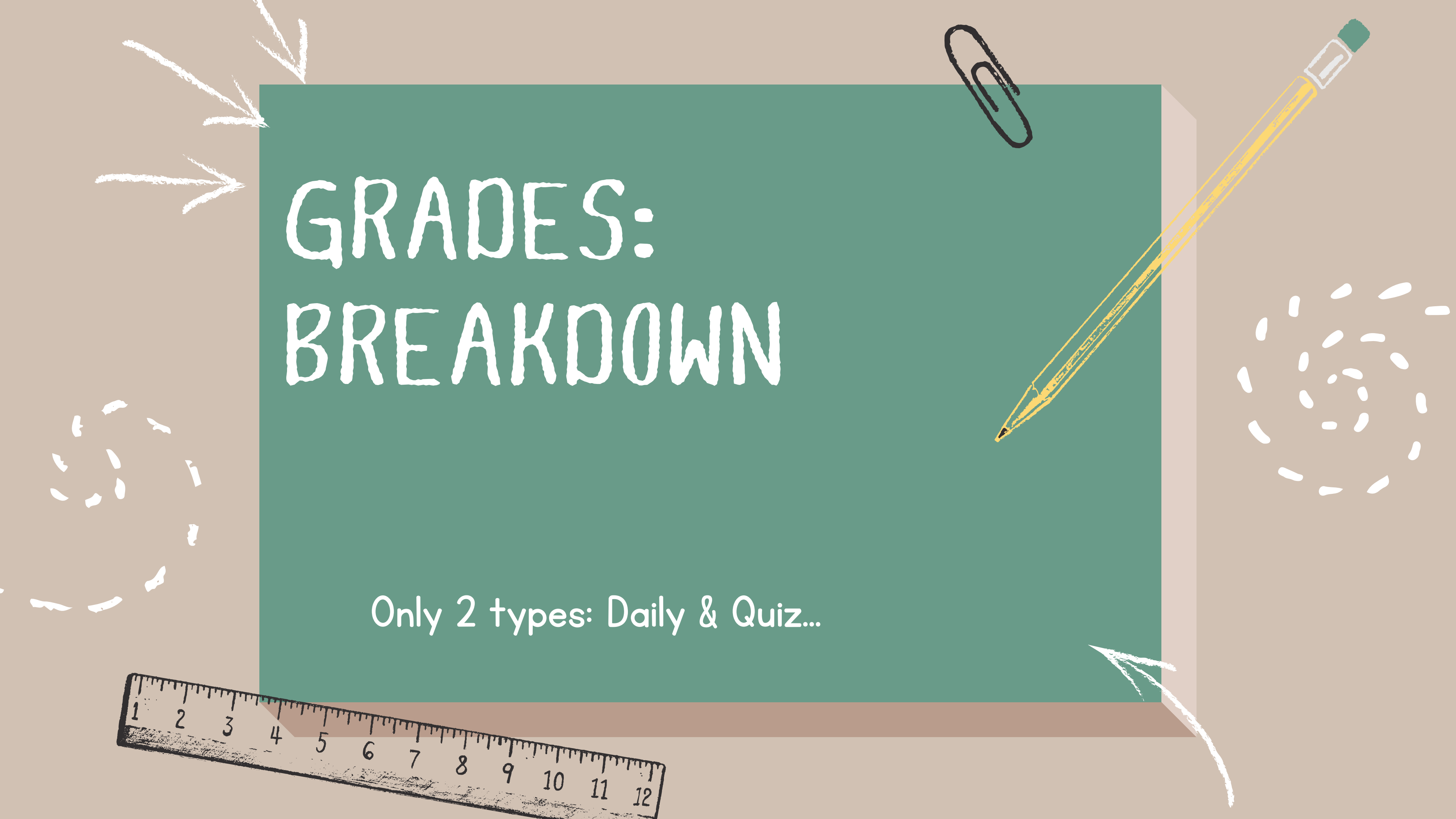


[Link to schedules](#)



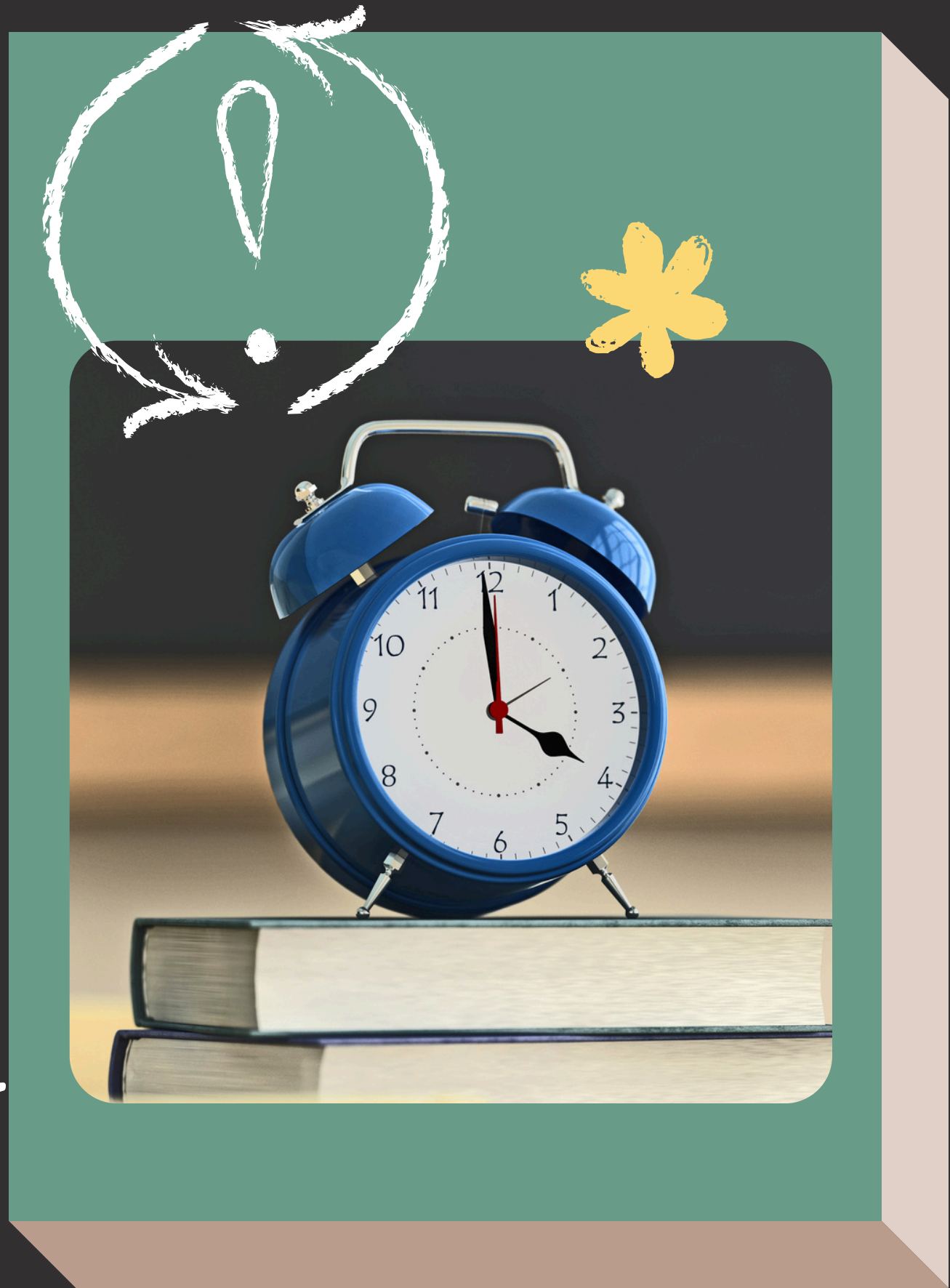
SCHEDULES





# GRADES: BREAKDOWN

Only 2 types: Daily & Quiz...



# DAILY GRADES:

- You will receive a daily grade based off of what you submit in class.
- Grades will be updated every Friday by 3:30 pm in Powerschool.
- If you submit work late... understand that grades will not be updated until the Friday of each week. (ALL GRADES ARE PUT IN ON FRIDAY)
- We will have quizzes at the end of each unit. These will count twice in Infinite Campus.

# TURN-IN PROCEDURES

There are 3 crates on the counter in the back of the classroom.

Each crate belongs to one of the 3 classes that I'm teaching.

Each crate has 4 folders in it. "Turn In, Absent, No Name, & Graded Work"

These crates are what we will be using to exchange work.

When you complete an assignment, you will put it in the "Turn In" folder.





# WEEKLY GRADES & UPDATES/CONFERENCE

Every Friday, I will empty the “Turn In” folder, put grades in Infinite Campus, & put all of the graded work in the “Graded Work” folder. All of this work will be passed back out to you each Monday, & I will show your grades in Infinite Campus.





# ATTENDANCE:

YOU ARE ALLOWED 6  
ABSENCES FOR EACH CLASS  
ABOVE 6... YOU WILL HAVE TO  
MAKE UP TIME IN  
ATTENDANCE  
RECOVERY , AT THE END OF  
THE SEMESTER.



If you miss 10 days... you will have  
to make an appeal to receive credit  
for the class at the end of the  
semester.

This includes excused & unexcused  
absences





# CELL PHONE POLICY:




- EACH OF YOU WILL BE ASSIGNED A NUMBERED POCKET IN THE CELL PHONE HOLDER.
- Attendance will be taken by your cell phone being in your assigned pocket when class starts.
- If you are on your phone during class, you will be written up as a minor incident. After the first write up... it will be reported to administration as a major offense.



# 5 GOLDEN RULES

For a fun and  
productive class!



- 
- 
- 
- 01 Respect the opinions of all others  
(you don't have to agree, but you  
do have to respect others)
  - 02 Form & respect your own  
opinions
  - 03 Analyze multiple sources on  
every issue
  - 04 Treat classroom  
discussions with respect
  - 05 Be willing to receive &  
engage in your own  
education



# THANK YOU FOR LISTENING

Do you have any questions for me?